

FixAssist XXT

Probe presetting device



Assembly manual
Original



Information about the device

Description	FixAssist XXT
Device type	Probe presetting device
Product number	626109-9140-100
Year of manufacture	2015
Manufacturer	Carl Zeiss 3D Automation GmbH Carl-Zeiss-Straße 32 73431 Aalen Germany

Document version

Document article no.	Version	Date	Note
626109-9140-900	1.0	09.09.2015	valid

A new version status will be created if changes are made to the content of this document. The previous status will be rendered invalid, and must be replaced by the valid document version.

All rights reserved

© 2015 Carl Zeiss 3D Automation GmbH

This document, including all figures contained therein, is subject to copyright protection. Any use beyond the strict limits of copyright law permission without the permission of the manufacturer is strictly prohibited and punishable by law. This applies in particular to reproduction, translation, microfilming, and storing or processing by electronic means. The replication of trade names and such in this document does not justify the assumption that such names should, in the sense of trademark and brand protection legislation, be regarded as unused and therefore usable by anyone.

Layout, illustration, photos and text: Carl Zeiss 3D Automation GmbH

Printed in Germany 09/2015

Table of contents

1 Introduction	6
1.1 Warranty and liability	6
1.2 Importance of this Assembly manual	6
1.3 Constructional modifications	6
2 Structure, function and technical data	7
2.1 Proper usage	7
2.2 Misuse	7
2.3 Scope of delivery	8
2.4 Components and function	11
2.5 Technical data	12
3 Maintenance	13
3.1 Cleaning and care	13
3.2 Maintenance	13
3.3 Service contact	14
4 Taking out of operation, disposal and transport	15
4.1 Disposal and recycling	15
4.2 Notes on storage	15
4.3 Transport	15

1 Introduction

1.1 Warranty and liability

Our General Terms and Conditions of Sale and Delivery always apply.

No warranty or liability claims for personal injury or material damage can be accepted if they relate to one or more of the causes given below:

- Improper use of the product.
- Incorrect installation, start-up, operation and maintenance of the product or use of spare parts not approved by the manufacturer.
- Not observing the instructions in the operating manual in regard to all service life phases of the product.
- Unauthorised structural modifications made to the product.

1.2 Importance of this Assembly manual

This Assembly manual is used to operate the FixAssist XXT correctly and safely in the broadest sense. This is intended for the user.

1.3 Constructional modifications

No modifications, additions or conversion work are to be carried out on the FixAssist XXT without the manufacturer's approval.

This also applies to welding work on load-bearing parts. All conversion measures require written permission from the manufacturer.

Parts must be replaced immediately if not in perfect working order. Only genuine spare and expendable parts may be used. If third-party parts are used, it is not possible to guarantee that they have been designed and manufactured to the relevant load and safety requirements.

2 Structure, function and technical data

2.1 Proper usage

The FixAssist XXT from Carl Zeiss 3D Automation GmbH is exclusively intended for setting and installing XXT probes. Information about the technical specifications is provided in the "Technical data" chapter.

Proper usage also includes:

- Observing all instructions in the installation manual.
- Completing the required inspection and maintenance work.

2.2 Misuse

The FixAssist XXT from Carl Zeiss 3D Automation GmbH is exclusively intended for setting and installing XXT probes. Use of any other kind or outside of this scope is regarded as improper. The manufacturer cannot accept any liability for damage arising from such use.

In particular, misuse refers to:

- Use of objects that are not designed for this probe presetting device.
- Changing or modifying the probe presetting device without authorisation.
- Non-observance of laws, regulations, safety instructions and the installation manual.

2.3 Scope of delivery

Assembling probe systems requires a great deal of care and precision. The purpose of the FixAssist XXT is to ensure that probes always meet the accuracy requirements and can be reproducibly reproduced. This assembly station reliably ensures that the necessary angles and probe alignments are achieved on the exchange plate.

A probe plate with probe can be set and installed on the FixAssist XXT setting device. The angle about the CMM Z-axis and about a horizontal axis can be accurately and reproducibly calibrated.



Fig. 1: FixAssist XXT probe presetting device

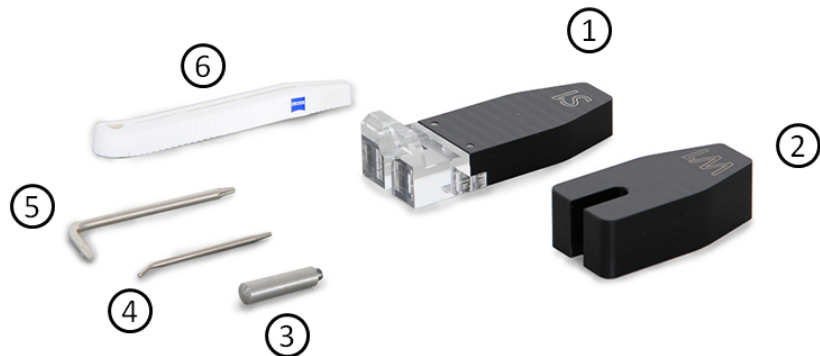


Fig. 2: Scope of delivery of the FixAssist XXT

The FixAssist XXT probe presetting device with adapters and tools included in the scope of delivery:

1. Adapter S1
2. Adapter W1
3. Alignment pin
4. Pin wrench
5. Torx screwdriver T1, angled
6. XXT styli assembly pliers

Article number and designation of the adapters and tools

Article number	Designation	Number
626109-9140-160	Adapter S1	1
626109-9140-190	Adapter W1	1
626109-9140-120	Alignment pin	2
626109-0056-000	XXT styli assembly pliers	2
000000-0015-323	Pin wrench	2
626109-0053-000	Torx screwdriver	2

2.3.1 Additional options

With the following adapter set, it is possible to set angles of angled elements (626103-6180-021). The set is not included in the scope of supply and can be ordered separately from Carl Zeiss 3D Automation GmbH.

Article number	Designation
626109-9140-300 Angled element adapter set	
626109-9140-110	Adapter K1
626109-9140-140	Adapter K2

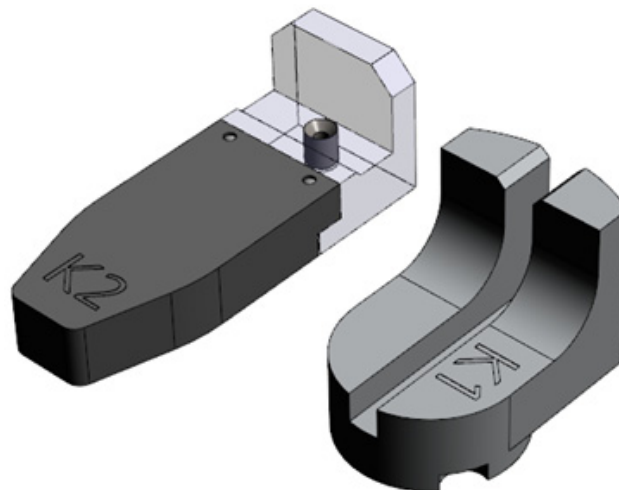


Fig. 3: Angled element adapter set

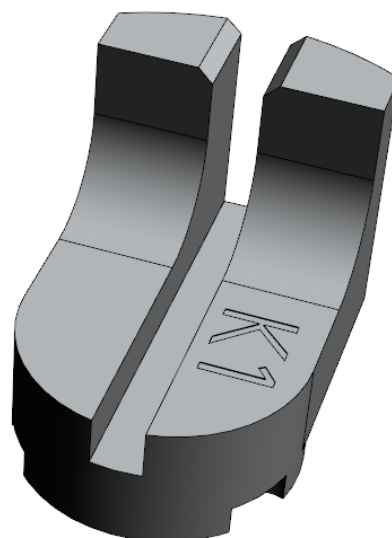


Fig. 4: Adapter K1

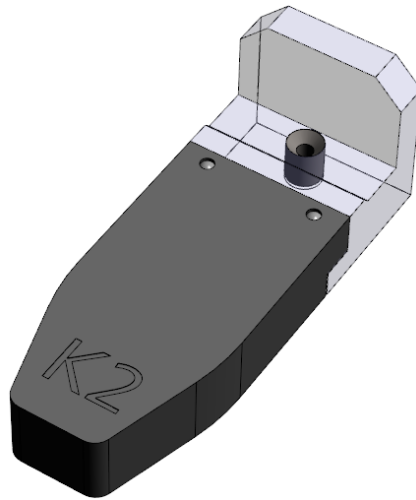


Fig. 5: Adapter K2

2.4 Components and function

Information and videos for operating the FixAssist XXT are available from: www.taster.zeiss.de/fixassistxt/

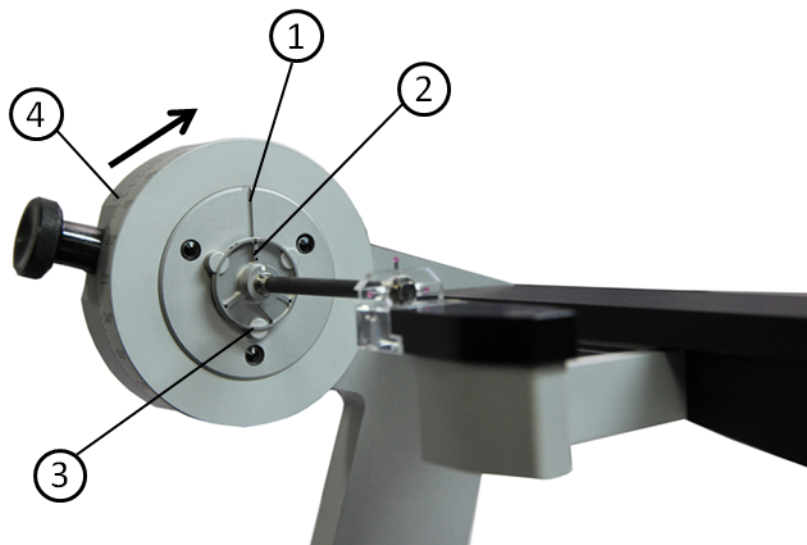


Fig. 6: Setting the angles

1. Orientation groove for probe plate
2. Probe plate aligning aid (must line up with orientation groove)
3. Holding pin for probe plate (3x)
4. Vernier for angle setting (accuracy 0.25 °C) on the left carrier.

Important: Turn the scale disc in the direction of the arrow to set the angle. The arrow is shown next to the vernier for setting the angle.

2.5 Technical data

Condition	Value
Weight	approx. 9.3 kg
Dimensions	345 mm x 267 mm x 248 mm (L/W/D)
Ambient temperature	5 - 40 °C
Air humidity	30-95% (non-condensing)
Storage temperature	5 - 40 °C

3 Maintenance

Cleaning and maintenance work is only allowed to be carried out by instructed personnel.

3.1 Cleaning and care

The FixAssist XXT must always be kept clean. The device must always be kept free of tools, liquids, chips and other foreign substances.

Used substances and materials must be handled and disposed of correctly, in particular when cleaning with solvents.

Basic requirements for all materials: Dusty parts are damp-cleaned, never wipe in dry condition! It is necessary to use a mild detergent and soft cleaning materials (cloth, sponge or chamois leather).

The following are not allowed to be used:

- Abrasive agents or sharp/degreasing cleaning agents.
- Hard sponges or brushes.
- Chemicals such as acetone, carbon, carbon tetrachloride, methyl ethyl ketone, paint thinners or alcohol compounds with an alcohol concentration of more than 5%.
- Compressed air for cleaning by blowing out.

3.2 Maintenance

Maintenance exclusively by trained specialist personnel from the manufacturer.

3.3 Service contact

Service contact:

Carl Zeiss 3D Automation GmbH
Carl-Zeiss-Straße 32
73431 Aalen
Germany
Tel.: +49 7361 6336-0

4 Taking out of operation, disposal and transport

4.1 Disposal and recycling

Disassembly and disposal must only be carried out by specialised personnel from the owner, observing the relevant accident prevention regulations. When disposing of FixAssist XXT or individual components, different elements must be disposed of separately in accordance with relevant national and regional waste disposal regulations.

4.2 Notes on storage

If the FixAssist XXT is put into storage, it must be stored in a dry and dust-free location. The recommended storage temperature is +5 °C to 40 °C.

4.3 Transport

The device is only allowed to be transported in the cardboard box provided for this purpose.

Important note: The probe presetting device is never allowed to be lifted by the upper rail under any circumstances. The FixAssist XXT is lifted at both sides on the subframe. Safe transport is guaranteed only if all parts have been carefully packed and cushioned and secured on the transport equipment in such a way as to prevent any shifting, tilting, falling or damage.